



Devonshire Road, London, W4 2HD

A bright & meticulously refurbished two bedroomed duplex apartment situated in the heart of Chiswick just moments from the main high road with its array of boutique shops and restaurants. Accommodations provides stunning spacious open plan living area, with galley style fully fitted kitchen with island unit for occasional dining, overhead roof skylights, and full height glazed sliding doors to the rear providing both natural light and access into the private rear garden with a paved patio and close boarded paneling, wood flooring throughout the ground with underfloor heating, two double bedrooms both with bespoke custom built wardrobes with hanging and storage areas, luxury main bathroom with further walk-in shower room. Local transport links include both Turnham Green & Stamford brook tube stations, numerous bus routes with convenient vehicular access via A4/M4 central London. Hounslow Council Band: The property is offered flexible on furnishings and is available 13th February 2026

- Lovely central Chiswick location
- Moments from most amenities
- Fabulous duplex garden apartment
- Great for transport links
- Beautiful open plan living area/kitchen
- Two double bedrooms
- Luxury bathroom & Further ensuite shower room
- Private landscaped rear patio garden
- Viewing highly recommended
- Available 13th February furnished/unfurnished

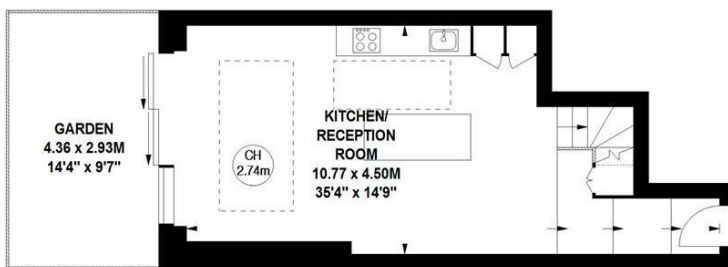
£2,900 Per Calendar Month

Devonshire Road, W4

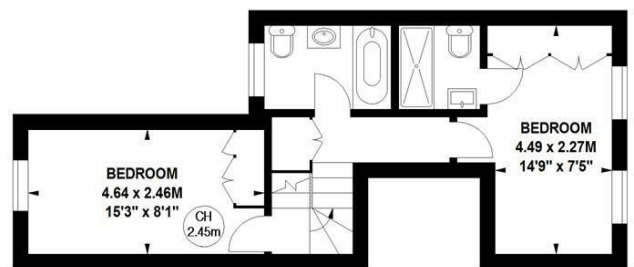
Approximate gross internal area

75.62 sq m / 814 sq ft

Key :
CH - Ceiling Height

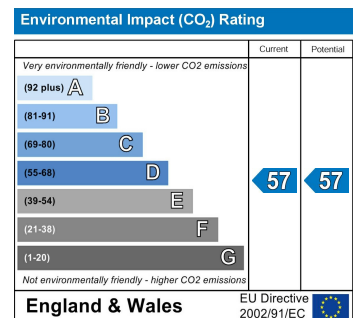
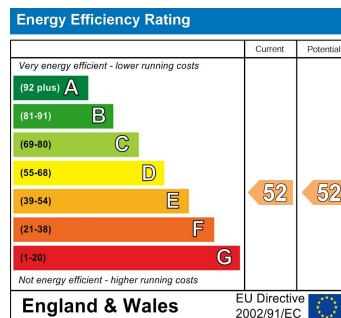


Ground Floor



First Floor

Not to scale, for guidance only and must not be relied upon as a statement of fact.
All measurements and areas are approximate only



5-7 Turnham Green Terrace, Chiswick, London, W4 1RG

Tel 020 8747 8800

E-mail lettings@whitmanandco.com

Website www.whitmanandco.com



MISREPRESENTATION ACT 1967

Whitman & Co. for themselves and for the vendors give notice that these particulars do not constitute any part of, an offer of contract. All statements contained in these particulars are made without responsibility on the part of Whitman & Co. or the vendor. None of the statements contained in these particulars is to be relied upon as statements or representations of facts. Any intending purchaser must satisfy himself by inspection or otherwise as to the correctness of each of the statements contained in these particulars. The vendor does not make or give, and neither Whitman & Co. or any person in their employment has any authority to make or give, any representation or warranty whatever in relation to the property.